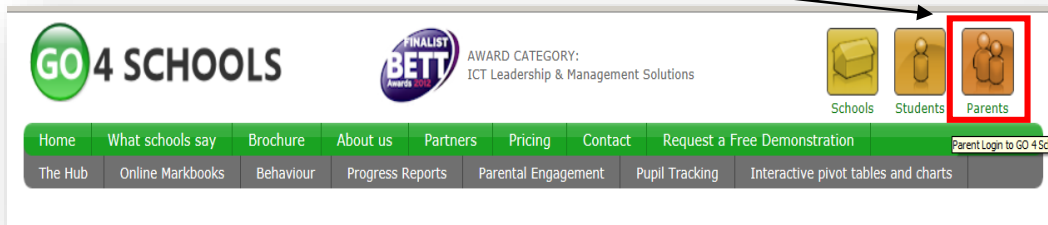


Guide on how to access your child's online information in Go4Schools

Accessing the system

1. Go to the school website: www.claremont-high.org.uk and click on the Go4Schools link on the home page, or use the web address www.go4schools.com
2. Click on the Parent tab:



3. Type your email address into the 'first time user' box and a password will be automatically sent to you. Once in, you can change this password in 'my setting'.

The screenshot shows the 'GO 4 PARENTS' login page. It has a green header with the 'GO 4 PARENTS' logo. Below the header is a 'Welcome' section with the text: 'Welcome to the GO 4 Schools login page for Parents and Guardians. If you have been provided with access by your child's school you can use GO 4 Schools to access their reports and to see their attainment, attendance and, for many schools, their behaviour records too.' There are two input fields for 'Email address:' and 'Password:', and a checkbox for 'Remember my email address'. A 'Log in' button is below these fields. Below the login section is a 'First-time User?' section with the text: 'If you haven't logged on to GO 4 Parents and Guardians before, type your email address and click the "please send me a password" button. (Please note that you need to provide an email address that has been registered in GO by the school(s) that your child/children attend.)' There is an 'Email address:' input field containing 'parent@claremont-high.info', which is highlighted with a red box. Below this field is a 'Please send me a password' button, also highlighted with a red box. A red arrow points from the text 'Enter your email address here and then click on Please send me a password.' to the 'Please send me a password' button.

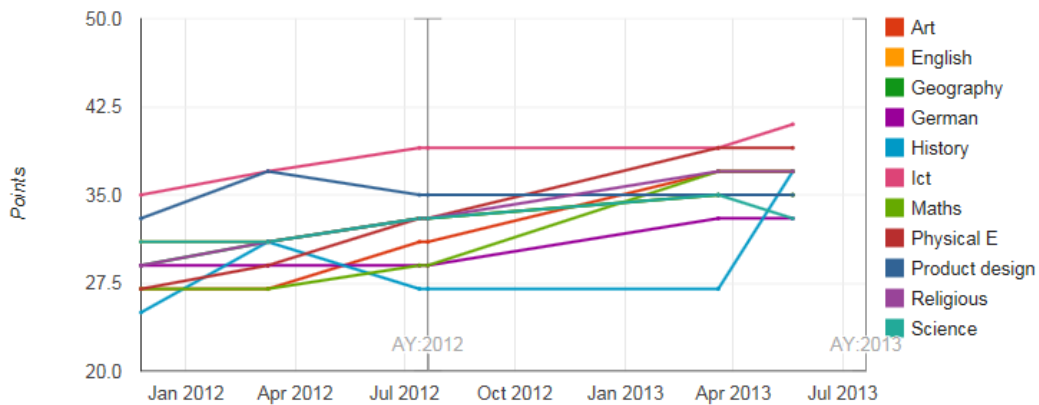
Enter your email address here and then click on Please send me a password.

Flight Paths

The flight path chart shows the progress your son/daughter is making over the time. It details the progress they are making towards their target grades in each subject. It gives this information over time, so you can look at the progress say from Y10 to Y11 or Y12 to 13. **Note that flight paths do not exist for Yr12 pupils.**

Student flight path Alpha

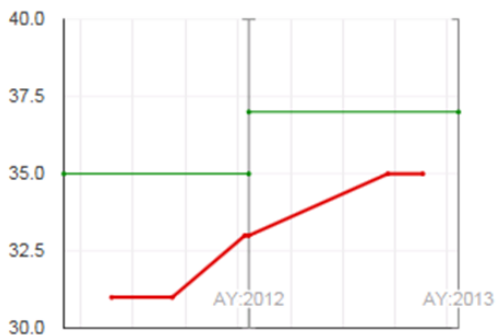
The flight path chart displays information drawn from progress grades for subjects in the current academic. If these subjects are linked to subjects in previous academic years, information is drawn from those subjects too.



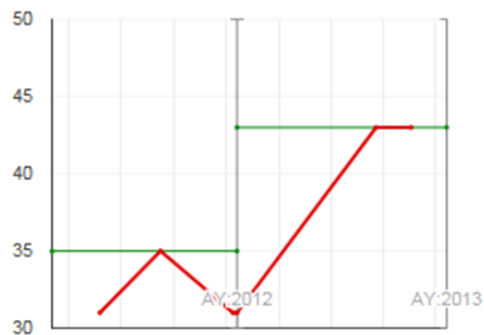
[View additional flight paths](#)

It is easier to view each subject individually by clicking here on 'view additional flight paths'.

Religious



Science



The green line is the target grade and the red the progress over the year any blue lines that are also present are the baseline levels (the start of year level).

What do the points mean on the flight path?

The points are a way of measuring GCSE and GCE grades. Points are used instead of grades as it will be easier to show the progress over time from Y7 to Y13 for example.

GCSE point scores

A* is worth 58 points, A=52, B=46, C=40, D=34, E=28, F=22, G=16.

GCE point scores

A* is worth 300 points, A = 270, B = 240, C = 210, D = 180, E = 150.

Detailed progress

Detailed progress

Subject	Year 7 Baseline	Teacher target	Current level	Predicted Grade	Final...	Mark sheet summary
Biology	-	B	A+	B	-	TA Levels - Yr11 A+

The detailed progress section has individual subject details on;

- Teacher targets
- Predicted grades/levels if applicable
- Current level (the grade pupils are on at this point in time)
-

TA levels - these are teacher assessments (TA1,TA2,TA3) taken once every term to indicate a teacher's assessment of where pupils are at that point in time.

Other information you can access in go4Schools

Attendance

Attendance	94.23%
Authorised absences	6
Unauthorised absences	04



Attendance Data - This is always shown up to the previous day.

Behaviour – all details of rewards and sanctions are available to view. The latest five are shown on the front page and you can select the full history by clicking on 'All events'.

All events in 2012, Sep 2011, Oct 2011, Nov 2011

When	Choice
Mon, 28 Nov	Homework completed to a good standard Year 7, Mathematics, 7n/Ma3a, 7n/Ma3b
Mon, 28 Nov	Classroom Star Year 7, Art & Design, 7N2/Ada, 7N2/Adb
Thu, 24 Nov	Classroom Star Year 7, Art & Design, 7N2/Ada, 7N2/Adb

Progress and Reports –in addition to this real-time report, you will receive a full written report which can be accessed from here.

Progress and reports

Subject	09 Jul 2010	Current grade/level
Art & Design	4c	-
Design Tech	4b	4b
Drama	3c	3c
English	4a	4a
Geography	4c	4b
German	2a	2a
History	4b	4b
Info Technology	5c	5c
Mathematics	5b	5b
Music	4c	4c
Phys Education	-	-
PSHE	3c	3c
Religious Studies	4b	4b
Science	5c	5c
Tutorial	-	-
Attendance	97.44%	95.00%
	View report	

If you have any problems then please contact the school using this email address:

g4sparents@claremont-high.org.uk